

Please read and follow the instructions carefully. You may also scan the QR code below to view the operation video:

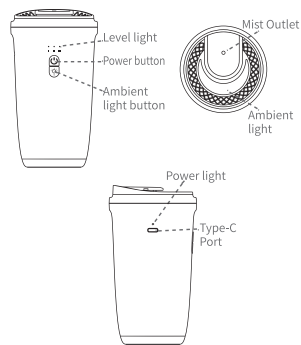


Equipment Operation Video

Equipment after-sales Video

PRODUCT INFORMATION		
Size: 78x78x143mm	Weight: 285g	Power: 2W
Input: 5V/1A	Capacity: 10ml	Coverage: 10-50m ³

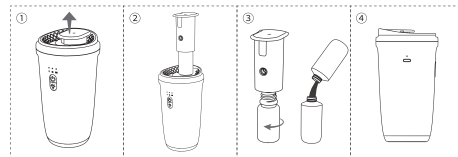
WHAT'S INCLUDED			
Scent Diffuser (with bottle) x1	Type-C Cable x1	After-sales card x1	User Manual x1



01

1 INSTALLATION

Hold the device firmly with one hand. Pull the atomizer head straight up with the other hand. Unscrew the bottle, fill with dedicated fragrance oil, and reassemble all parts. Insert the Type-C cable to power on.



WARNING: After adding essential oil, the device must always be kept upright and facing upwards. It should not be inverted or tilted, as this may damage the internal components of the device.

2 BUTTON & LIGHT

◆ Power Button:

- Press & hold 2s: Power ON/OFF.
- ON: Defaults to Mode 1 (5s pump ON / 300s OFF).
- Single press: Cycle through 3 modes:

Mode 1		1 blue LED	5s ON / 300s OFF
Mode 2		2 blue LEDs	10s ON / 180s OFF
Mode 3		3 blue LEDs	20s ON / 120s OFF

◆ Ambient Light Button:

- Single press: Cycle through: White → Yellow → Blue → OFF (loops when powered ON).

02

◆ Charging Indicator (Type-C powered):

	Charging
	Fully charged
	Low battery (<3.3V)

Note: Auto-shutdown if voltage drops below 3.0V. Recharge promptly.

◆ Sleep Mode:

- Auto-sleep: 60s after car ignition OFF + no vibration detected (pump stops, ambient light off).
- Auto-wake: Resumes operation upon detecting vibration when car restarts.

3 MAINTENANCE AND UPKEEP

Scent diffusers require regular cleaning and maintenance every 1-2 months when in normal use. Below is the method for cleaning.

◆ Spray nozzle cleaning

* Use 95% "alcohol + cotton swab" to gently wipe the nozzle, removing the residue of oil liquefaction

* Cleaning the atomizer core can be cleaned by soaking a cotton swab in 95% alcohol and wiping the core with it, or by soaking the atomizer core in alcohol and then allowing it to dry.

◆ Oil bottle cleaning

* Before changing oils each time, clean the oil bottle with alcohol and allow it to dry completely.

When equipment is not used for a long period, it is necessary to clean the internal nozzles and other components thoroughly.

* Add 95% industrial alcohol to the empty bottle.

* Turn on the device and run it for 10-15 minutes.

* Turn off the device, pour out the alcohol from the bottle and let it dry before reassembling the device.

* Power off storage, unplug the power supply, to prevent electrostatic damage to the circuit.

03

Grade	On time(s)	Pause time(s)	Consumption (g/h)
Minimum concentration	5s	300s	0.02
Medium concentration	10s	180s	0.08
Maximum concentration	20s	120s	0.21
100% Text	Continuous On	0	1.44

Note: The data is for reference only. The amount of mist produced by different oils may vary. The data above is based on the oil used in the test: Park Hyatt (density ≥ 0.95).

◆ Replacement/Maintenance is guaranteed for one year from the date of purchase.

If you need to replace components for free within the warranty period, the device must be under normal use conditions and the failure must be due to manufacturing reasons to provide warranty. During the warranty period, component fees covered by the warranty are waived. This warranty does not include consumables such as oil. To obtain warranty service, please be sure to contact the after-sales department during the warranty period and present the original or copy of the valid warranty card and the official commercial invoice to the relevant departments.

◆ The following situations do not enjoy free warranty service:

- ① Damage & problems caused by Accidents & Fire!
- ② Not used properly and wrong operation.
- ③ Repaired by non-professionals, causing some parts damaged.
- ④ Damaged during transportation.
- ⑤ Without our warranty card.
- ⑥ Without proper cleaning for a long time.
- ⑦ The machine is overworked.
- ⑧ Machines & Parts not from us.
- ⑨ Machines not purchased from official channels.
- ⑩ Send the machines back without permit from the manufacturer.



SAFETY PRECAUTIONS FOR USE

◆ Safe use

- ① After loading the essential oil, the device must always remain upright and facing upwards, not inverted or tilted, otherwise it may damage the internal components of the device.
- ② During the transportation of the equipment, it is necessary to empty the essential oils from the bottles to avoid oil leakage and damage to the equipment.
- ③ This device cannot be used for air humidification and cannot be filled with water;
- ④ Please place it in a location inaccessible to children and pets.
- ⑤ Store in a dry and cool place, do not use this device in high temperature or humid environments.

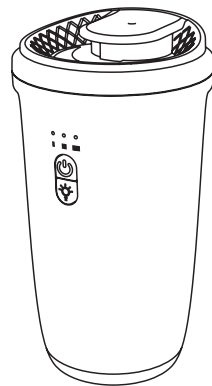
◆ Forbidden

- ① Do not cover the equipment in use.
- ② Prohibit the use of overloaded power outlets, power cords, or damaged power plugs, as this may damage equipment or even cause fires.
- ③ Essential oils should not be ingested and should be kept away from contact with the eyes. In case of eye contact, rinse thoroughly with plenty of water; if there is a strong sensation, seek medical attention immediately.
- ④ Please do not disassemble the equipment. If any abnormalities are found in the product, please contact us promptly.

User Manual

Smart Car
Scent Diffuser

Scent machine



[Please read the manual carefully before use and keep it properly]